

# MOST

*Take full control  
of your supply chain*

LOCATION / TEMPERATURE / LIGHT / HUMIDITY / SHOCK



REAL-TIME MONITORING POWER

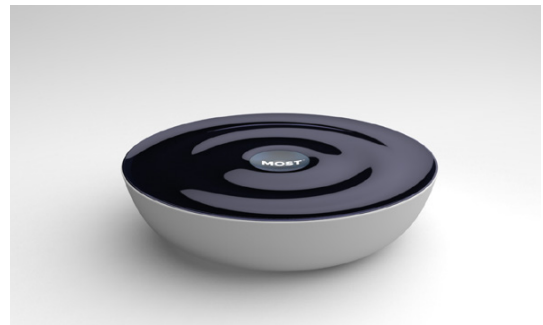
most.tech

# BECOME A MARKET LEADER IN TRANSPORTATION

From departure to arrival, MOST provides you with real-time updates on all the external influences affecting your cargo. With perfectly accurate data, easily accessed and evaluated with our user-friendly and web-based interface, you will be able to reduce the risk of damage and optimise all future transport. All for the benefit of your efficiency, your profitability and the global environment.

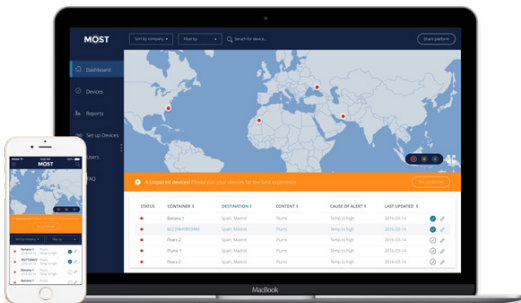
## **MOST DEVICE: MARKET-LEADING TECHNOLOGY**

- One-touch activation
- 100-day battery life
- Reusable & rechargeable
- 4 digital sensors: temperature, light, humidity, shock
- Location updates via GSM network
- Pre-calibrated for superior, laboratory-tested accuracy
- Strength of MOST antenna allows monitoring of any environment
- Continuously uploads all data via GSM network



Using a GSM network connection, the device continuously uploads sensor data and location to the internet, making all your information constantly accessible to you via the MOST control panel. Equipped with four digital sensors to detect temperature, light, humidity and shock, the device keeps you fully informed around the clock.

## **MOST CONTROL PANEL: 24/7 DATA ACCESS & REPORTING**



With our user-friendly mobile interface, you can access all your data effortlessly at all times, wherever you are.

No installation is required – simply log in. Generate tailored reports at the push of a button and share with any recipient of your choice.

- User-friendly mobile interface
- No hardware or software installation
- Completely web-based: never lose data
- Share device data
- Geofencing
- Tailored reports at the push of a button
- Alarms and notifications via email and SMS

# DEVICE SPECIFICATIONS

<b>GSM network</b>	Quad band GSM 850/900/1800/1900MHz GPRS data connectivity Location update every hour*
<b>SIM</b>	Global data roaming
<b>Battery type &amp; life</b>	Lithium-ion 100 days' use** 3 months' storage
<b>Charging interface</b>	USB-C
<b>Attachment</b>	Attaches with double-sided tape on the back side of the device Device should be attached close to doors
<b>Alarm function</b>	Programmable high and low limits; alarm is triggered when measurement exceeds set limits
<b>Start-up options</b>	Manual push button
<b>Typical dimensions</b>	Diameter: 125 mm Thickness: 30 mm
<b>Weight</b>	220 g
<b>Certifications</b>	Quality assurance CE/FCC Temperature and humidity sensor NIST traceable
<b>Computer/mobile interface</b>	Easy access to your data
<b>Water resistance</b>	IP54 = splash proof
<b>Sales pack</b>	Packaged in 10-device sales packs
<b>API integrations</b>	REST and PUSH service (JSON SOAP or XML)

\* **Location update** Within GSM coverage  
 \*\* **Battery life** Based on hourly sensor readings and GSM uploads, 60 days' use (one-year storage)  
 \*\*\* **Humidity** RH accuracy stated within temperature exposure range of 5°C to 60°C, non-condensing

<b>Digital light sensor</b>	Triggered by light
<b>Digital temperature sensor</b>	Default 60 mins measurement and data-sending interval. Upload can be adjusted. Temperature measurement range: -20°C to 55°C Temperature accuracy range: ±0.3°C over full temperature measurement range Resolution: 0.015 CERTIFICATION: NIST TRACEABLE
<b>External digital temperature sensor interface (probe ready)</b>	Default 60 mins measurement and data-sending interval. Upload can be adjusted. Digital interface using I2C and interrupt for waking up system USB-C connector
<b>Digital humidity sensor</b>	Default 60 mins measurement and data-sending interval. Upload can be adjusted. Humidity measurement range: 0% to 100% RH Humidity sensor accuracy range: ±2% RH from 0 to 90% ±3% RH from 90 to 100% Relative humidity resolution: 0.01% RH***
<b>Digital shock sensor</b>	Default 60 mins measurement and data-sending interval. Upload can be adjusted. 3-axis G-sensor
<b>Programmable alert levels</b>	From control panel, including: light, temperature, humidity and shock sensors.

## UNBROKEN COMMUNICATION

The MOST device continuously uploads data to the internet via a GSM network connection, with automatic backup to the cloud – giving you the ability to make informed decisions based on real-time updates, and unprecedented power to build your business.



24/7 data control



Transparency for all stakeholders



Increased quality & safety



Enables proactive action



Eliminates human error



Increases profit potential

*Find us at **most.tech***

Want a special demonstration of our service? We will be happy to show how you can improve and secure your supply chain with MOST.



contact@most.tech

Blekholmsterrassen 36, SE 111 64 Stockholm

most.tech